

# News



700 galleria parkway  
suite 400  
atlanta, georgia 30339  
770.803.0900  
770.805.0903 fax  
www.parkdesignstudio.com

creating  
dynamic  
**outdoor**  
environments



### AWARD WINNING DESIGN

Congratulations to **Garden City** on receiving a 2008 Georgia Planning Association award in the **Outstanding Initiatives/Special Project-Small Community** category, recognized for its plans for a new Town Center. *jB+a provided planning and design services for the Town Center Park, City Hall, and downtown streetscape.*



Garden City Town Center Park and City Hall

## Trails and Greenways

Trails and greenways are one of the most popular components of parks and recreation development. **Within the realm of park development in today's economy, they are also the most easily implemented component, impacted least by lack of funding.** Trails and greenways can be partially funded by alternative sources, developed in phases, and in some cases, constructed with volunteer labor. Most of the jB+a park planning and design projects over the last several years have included trails of some type: natural surface, multipurpose, bike, pedestrian, etc. Let jB+a help you prepare a cost-effective trail implementation plan for your park or greenspace.



East Cobb Park multi-use trail, Cobb County, GA

## Grant Consulting Services

jB+a is assisting Georgia communities in locating new funding sources through our broad Grant Consulting Services. Our Grant Services can assist you during any phase of your search from the analysis of your community needs and research of available resources, to preparing applications and administration of the funding requirements. Let us help your community determine specific needs and match you with suitable funding programs to implement a host of potential projects, such as:

- recreational trails
- recreational activities
- playground equipment & maintenance
- planning
- health- and age-related grants

## Sustainable Sites Initiative

The **Sustainable Sites Initiative draft of Guidelines and Performance Benchmarks** has been released for review and comment. The Initiative is an exciting effort led by the American Society of Landscape Architects, and others, to create voluntary national standards for sustainable land practices. The Performance Benchmarks is anticipated to be incorporated into future versions of the LEED Green Building Rating System, and will also function as a stand-alone program. The Sustainable Sites Initiative process is being followed closely by the **LEED Accredited Professionals at jB+a**, in order to be able to incorporate the Guidelines and Benchmarks into projects even before the standards have been finalized. Visit [www.parkdesignstudio.com](http://www.parkdesignstudio.com) for more information on the Sustainable Sites Initiative and links to additional resources.

### This Issue:

Trails and Greenways

Grant Consulting Services

Sustainable Sites Initiative

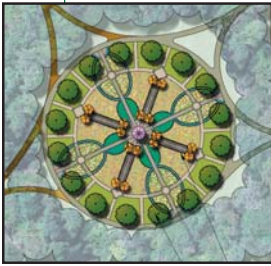
Project Spotlight: St. Simons Island

jB+a Turns 10!

design by jB+a copyright 2009. all rights reserved.

## Land...Water...Community

One of the founding principles of the practice of landscape architecture is rooted in the responsibility of our profession to serve as stewards of the land. Stewardship is an ethic that embodies assisting communities with cooperative planning, design and management services that facilitate the long-term sustainability of our environmental and cultural resources. jB+a has been working with the St. Simons Land Trust on a series of projects



Frederica Botanical Park garden

that embrace stewardship. These efforts include an island-wide greenprint plan, which identifies areas for cultural and natural resource protection as well as lands for park, greenway and blueway development.

The results of this process led to the master planning of two passive parks. The 65-acre Harrington Community Park master plan provides habitat, water quality and flood protection through the creation of a series of enhanced drainage swales and wetlands. Additionally, the finished park plan includes a live oak preserve, a series of community heritage gardens, and the restored historic Harrington School House. The Frederica Botanical Park master plan provides a 21-acre passive park that includes a multi-purpose open space field, nature trails and botanical garden.



St. Simons Island, GA

### Recent Projects:

- Skidaway Island State Park Multi-use Trails, Savannah, GA
- Rhodes-Jordan Park Renovation, Gwinnett County, GA
- Denny Dobbs Community Park Master Plan & CD's, Newton County, GA
- Historic Dotson House Landscape Renovation, Garden City, GA
- Hidden Cove Conservation Park Master Plan, Decatur, GA
- Little League Regional Headquarters and Stadium, Houston County, GA
- Harbins Community Park Master Plan, Gwinnett County, GA
- Frederica Botanical Park, St. Simons Island, GA

## jB+a Turns 10!

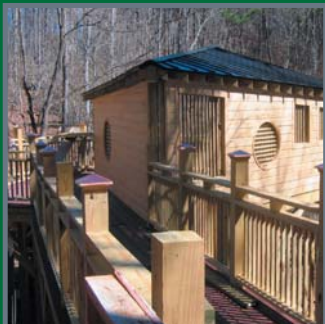
For 10 years, jB+a has assisted engineers, architects and communities with a wide range of services, including site land planning, regulatory tree protection and replacement, comprehensive landscape plans and detailed pedestrian hardscape drawings. We often function as an in-house landscape department, minimizing staff costs, risk and liability, and providing access to a recognized talent pool and range of expertise. Additional services that we offer include:

- Digital 2-D Visualizations
- CAD Production
- Project Renderings
- Grant Services
- Arborist Services

jB+a News

### jB+a, inc.

700 galleria parkway  
suite 400  
atlanta, georgia 30339  
[www.parkdesignstudio.com](http://www.parkdesignstudio.com)



Dunwoody Nature Center Treehouse, Dunwoody, GA

